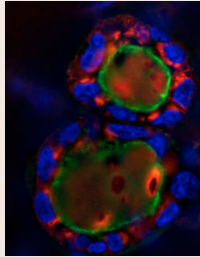


Journal of Cell Science

Volume 120 (13) 2007



Cover: Intracellular accumulation of the milk protein β -casein in mammary epithelial cells of lactating transgenic mice that express a constitutively activate form of the RhoA effector molecule PKN1. Cryosections of lactating mammary glands were stained with antibody against β -casein (red). Nuclei were counterstained with DAPI, and wheat germ agglutinin coupled to a green fluorophore was used to label the alveolar lumen. See article by A. Fischer et al. (pp. 2272-2283).

jcs.biologists.org

Research Articles

- 2151 **Caveolin-1 is required for lateral line neuromast and notochord development.** Nixon, S. J., Carter, A., Wegner, J., Ferguson, C., Floetenmeyer, M., Riches, J., Key, B., Westerfield, M. and Parton, R. G.
- 2162 **Smad4 is required for maintaining normal murine postnatal bone homeostasis.** Tan, X., Weng, T., Zhang, J., Wang, J., Li, W., Wan, H., Lan, Y., Cheng, X., Hou, N., Liu, H., Ding, J., Lin, F., Yang, R., Gao, X., Chen, D. and Yang, X.
- 2171 **Role of a $G\alpha_{12}$ protein splice variant in the formation of an intracellular dopamine D_2 receptor pool.** López-Aranda, M. F., Acevedo, M. J., Gutierrez, A., Koulén, P. and Khan, Z. U.
- 2179 **The C-terminus of ephrin-B1 regulates metalloproteinase secretion and invasion of cancer cells.** Tanaka, M., Sasaki, K., Kamata, R. and Sakai, R.
- 2190 **Titin in insect spermatocyte spindle fibers associates with microtubules, actin, myosin and the matrix proteins skeletor, megator and chromator.** Fabian, L., Xia, X., Venkitaramani, D. V., Johansen, K. M., Johansen, J., Andrew, D. J. and Forer, A.
- 2205 **Microtubules offset growth site from the cell centre in fission yeast.** Castagnetti, S., Novák, B. and Nurse, P.
- 2214 **Role of the small GTPase RhoA in the hypoxia-induced decrease of plasma membrane Na,K-ATPase in A549 cells.** Dada, L. A., Novoa, E., Lecuona, E., Sun, H. and Sznajder, J. I.
- 2223 **The effect of cellular cholesterol on membrane-cytoskeleton adhesion.** Sun, M., Northup, N., Marga, F., Huber, T., Byfield, F. J., Levitan, I. and Forgacs, G.
- 2232 **Ca^{2+} signaling through ryanodine receptor 1 enhances maturation and activation of human dendritic cells.** Bracci, L., Vukcevic, M., Spagnoli, G., Ducreux, S., Zorzato, F. and Treves, S.
- 2241 **AtMAP70-5, a divergent member of the MAP70 family of microtubule-associated proteins, is required for anisotropic cell growth in *Arabidopsis*.** Korolev, A. V., Buschmann, H., Doonan, J. H. and Lloyd, C. W.
- 2248 **Climp-63-mediated binding of microtubules to the ER affects the lateral mobility of translocon complexes.** Nikonov, A. V., Hauri, H.-P., Lauring, B. and Kreibich, G.
- 2259 **Stabilization and activation of p53 induced by Cdk5 contributes to neuronal cell death.** Lee, J.-H., Kim, H.-S., Lee, S.-J. and Kim, K.-T.
- 2272 **Impaired tight junction sealing and precocious involution in mammary glands of *PKNI* transgenic mice.** Fischer, A., Stuckas, H., Gluth, M., Russell, T. D., Rudolph, M. C., Beeman, N. E., Bachmann, S., Umemura, S., Ohashi, Y., Neville, M. C. and Theuring, F.
- 2284 **Role of p53 in antioxidant defense of HPV-positive cervical carcinoma cells following H_2O_2 exposure.** Ding, B., Chi, S. G., Kim, S. H., Kang, S., Cho, J. H., Kim, D. S. and Cho, N. H.

Cell Science at a Glance

2139 **Structure and duplication of the centrosome.** Azimzadeh, J. and Bornens, M.

Commentary

2143 **Journey to the grave: signaling events regulating removal of apoptotic cells.** Kinchen, J. M. and Ravichandran, K. S.